

OPEN SET
AIR COOLED

SERIES GSA_{22D-65D}

GSA22D-65D: The right solution against electricity mains failures

This series of generators provides peace-of-mind; with a greatly extended running time, these sets provide a professional solution against power failures, maintaining a constant power supply.



Economic

A long lifetime and very little maintenance mean very low operation costs.

Large autonomy

Extended fuel capacity means continuous performance.

Security

Gensets are safeguarded against unauthorised use and minimise the potential of accidental damage.

Safety

Generating sets designed with safety in mind – our commitment to personal protection.

MODEL		GSA22D	GSA30D	GSA42D	GSA65D
PRIME POWER	kVA/kWe	19,0/15,2	29,0/23,2	39,9/31,9	61,0/48,8
EMERGENCY POWER	kVA/kWe	20,1/16,1	30,0/24,0	41,0/32,8	62,1/49,7
ENGINE		F3L 2011	F4L 2011	F4L 912 GEN	F6L 912 GEN
AUTONOMY (75% LOAD)	h	25,8	17,2	12,7	22,8
FUEL TANK CAPAC.	l	90	90	90	240
DIMENSIONS (LxWxH)	mm	1400x750x1700	1400x750x1700	1800x750x1710	2200x1000x1620
WEIGHT	kg	550	605	776	954

PRIME POWER (PRP) (ISO 3046) RATING: PERMISSIBLE POWER OUTPUT WITH NO TIME LIMITATION, PLUS 5% EXTRA POWER FOR GOVERNING PURPOSES

EMERGENCY POWER (LTP) (ISO 3046) RATING: MAXIMUM POWER WHICH CAN BE DELIVERED FOR UP TO 500 HOURS PER YEAR OF WHICH A MAXIMUM OF 300 HOURS IS CONTINUOUS RUNNING

ALL MODELS COMPLY WITH TA LUFT-4000 REGULATION

OPEN SET
AIR COOLED

SERIES GSA_{22D-65D}

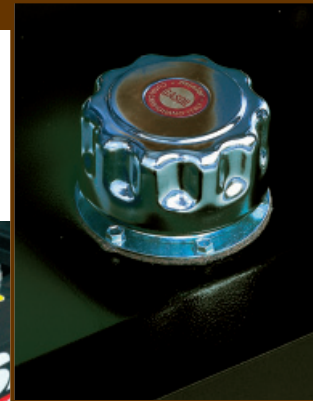
Reliability

- Deutz engines extremely high load acceptance capacity ensures instant electricity supply
- They respond quickly to load fluctuations. In addition, the application will not suffer from frequency deviations
- Highly efficient alternators
- Constant supply guaranteed by the electronic voltage regulator (Ⓢ) under any generator operating condition
- Rated capacity battery for immediate engine start
- Integrated cooling system keeps cylinder heads receiving additional air cooling thanks to diagonal fan



Facility of handling

- Reinforced steel base frame with bolted support legs (Ⓢ) to facilitate installation and fork truck transport



Large autonomy

- High capacity fuel tank for longer work without fuel refilling (Ⓢ)

Easier use

- Generating sets are delivered ready to start and require no special foundations, so that they can be installed anywhere
- A large number of optional available for any kind of special use you may require
- Easy access to the fuel filling cap which is mounted on the base frame
- High efficiency air filter (Ⓢ) with easy removable cartridge



Security

- The engine protection (stop solenoid) guarantees the shutdown of the machine when an engine failure occurs
- Hot parts protection against accidental contact
- The exhaust gas emissions meet the most restrictive regulations
- Moving and rotating parts protection (Ⓢ) against accidental contacts
- Industrial silencer to reduce engine noise emissions

Economic

- Engines with long maintenance intervals and low fuel consumption
- The brushless construction of the generator (Ⓢ) assure a long service life



The producer reserves the right to introduce changes to models and features without prior notice. Models, version and associated products characteristics can vary according to the markets.

CERTIFICATION

Production sites according to ISO 9001 / ISO 14001 directions



SERVICE

After sales service world wide.
12 months warranty.
All the gensets are completely tested before dispatch.