



SERIES

GSL_{22D-42D} - GSW_{15P-22P}
GSW_{65D-170D}

GSL_{22D-42D} - GSW_{15P-22P}
GSW_{65D-170D}: Rental Energy

This range of generators is suitable for any application. They have all the features associated with Pramac Generators; low noise, security, greatly extended running time and versatility in all applications. The perfect sets for rental.



Large autonomy

Extended fuel tank capacity means continuous performance.

Safety

Generating sets designed with safety in mind – our commitment to personal protection.

Ease of handling

Easy transportation – less effort required to move the generator.

Silent

Certification of approval in compliance with section 8 of Directive 2000/14/EC relating to environmental noise emission by equipment for outdoor use.

MODEL		GSW15P	GSW22P	GSL22D	GSL30D	GSL42D	GSW65D	GSW80D	GSW110D	GSW145D	GSW170D
PRIME POWER	kVA/kWe	13,0/10,4	19,4/15,5	20,0/16,0	29,0/23,0	39,3/31,4	58/46	74/59	102/82	135/108	159/127
EMERGENCY POWER	kVA/kWe	14,4/11,5	21,4/17,1	21,1/16,8	30,0/24,0	41,2/33,0	63/50	78/63	108/87	142/113	167/134
ENGINE		PERKINS 403C-15G	PERKINS 404C-22G	DEUTZ F3M 2011	DEUTZ F4M 2011	DEUTZ BF4M 2011	DEUTZ BF4M 2012 G2	DEUTZ BF4M 2012 C	DEUTZ BF4M 1013 EC	DEUTZ BF6M 1013 E	DEUTZ BF6M 1013 EC
AUTONOMY (75% LOAD)	h	17,9	12,5	31,4	21,6	16,3	33,4	30	21	16	14,3
FUEL TANK CAPAC.	l	50	50	120	120	120	350	350	350	350	350
SOUND POWER LEVEL	LWA	86	87	92	92	92	97	97	97	97	97
SOUND PRESSURE AT 7 M	dB(A)	61	62	67	67	67	72	72	72	72	72
DIMENSIONS (LxWxH)	mm	1800x830x1295	1800x830x1295	2225x1100x1290	2225x1100x1290	2225x1100x1290	2700x1150x1535	2700x1150x1535	3000x1150x1680	3400x1250x1680	3400x1250x1680
WEIGHT	kg	700	765	910	974	1064	1300	1460	1900	2180	2250

PRIME POWER (PRP) (ISO 3046) RATING: PERMISSIBLE POWER OUTPUT WITH NO TIME LIMITATION, PLUS 5% EXTRA POWER FOR GOVERNING PURPOSES

EMERGENCY POWER (LTP) (ISO 3046) RATING: MAXIMUM POWER WHICH CAN BE DELIVERED FOR UP TO 500 HOURS PER YEAR OF WHICH A MAXIMUM OF 300 HOURS IS CONTINUOUS RUNNING

ALL MODELS COMPLY WITH TA LUFT-4000 REGULATION

SERIES **GSL**_{22D-42D} - **GSW**_{15P-22P} **GSW**_{65D-170D}

Facility of handling

- Reinforced steel base frame with bolted support legs to facilitate installation and fork truck transport.
- A central lifting bridge (🔑) allows the unit to be easily lifted by a crane.

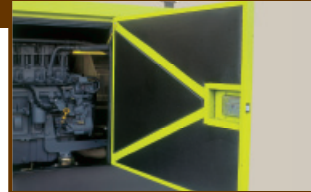


Large autonomy

- High capacity fuel tank for longer running time without fuel refilling (🔑).

Safety

- All metal parts are connected to an external grounding point. Fault currents are connected to the ground for your safety.
- Visible and accessible emergency shutdown switch protects against incorrect use of the generator.
- The whole panel is protected by a lockable door (🔑).

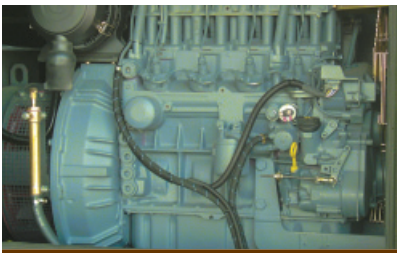


Silent

- Soundproof canopy built in high quality steel and sound attenuating material reduces noise emissions to a minimum (🔑).
- Highly efficient silencer reduces noise emissions for sensitive locations operating.
- Anti-vibration isolators ensure vibration free operation.

Reliability

- Constant supply guaranteed by the electronic voltage regulator under any operating condition.
- In oil cooled engines (GSL), the single fluid for both cooling and lubrication avoids corrosion and cavitations (🔑).
- Deutz engines have extremely high load acceptance capacity and respond quickly to load fluctuations.



Security

- Lockable fuel cap, positioned to avoid damage, prevents unauthorised access
- One key system for doors, fuel cap and engine start (GSL)
- Access doors are equipped with lockable handles.
- The engine protection (stop solenoid) guarantees shutdown when an engine failure occurs.
- The exhaust gas emissions meet the most restrictive regulations. (🔑)
- Leak proof tray for liquid containment eliminates the possibility of environmental contamination

Easy maintenance

- Engine maintenance is easier through large doors.
- Front panels are completely detachable. Easy access for radiator cleaning and alternator service (🔑).
- A sturdy manual oil drain pump is included.
- External fuel filling for easier supply of fuel (GSL).



Rental optional kits



- Manual analogic control panel
- Socket kit
- The heavy duty galvanized skid allows haulage on work site
- Two slots on each side have been incorporated so that the generator can safely be transported by a fork truck
- Three way fuel valve for connection to external tank improves the autonomy of the generating set for extended shift work
- Leak proof tray for liquid containment eliminates the possibility of environmental contamination
- A battery isolation switch disconnects system's batteries in case of maintenance
- Heavy duty fuel filter with water separator and drain improves the fuel quality protecting the injection system against solid and liquid impurities

CERTIFICATION

Production sites according to ISO 9001 / ISO 14001 directions



CONFORMS TO THE EUROPEAN SAFETY RULES

SERVICE

After sales service world wide.
12 months warranty.
All the gensets are completely tested before dispatch.

The producer reserves the right to introduce changes to models and features without prior notice. Models, version and associated products characteristics can vary according to the markets.