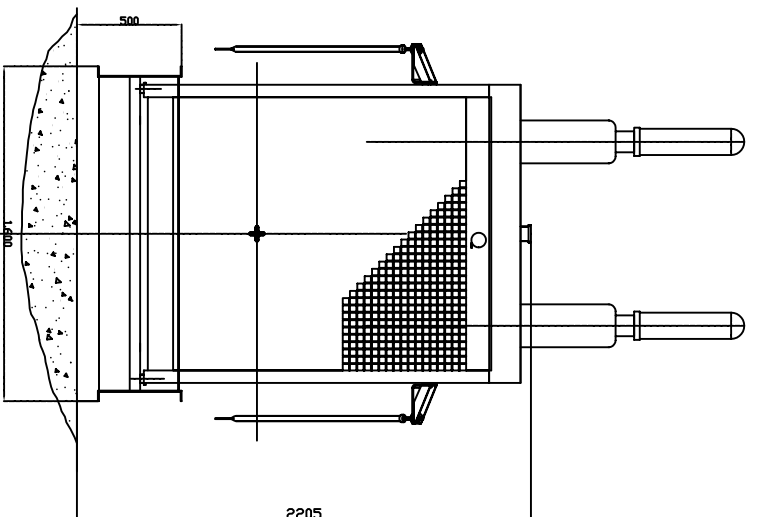


EXHAUST PIPE DIAMETER
HAS TO BE INCREASED 10 MM
FOR EACH 10 M OF PIPE

COOLING AIR
INTAKE



TOTAL WEIGHT APPROX.:
3.730KG / 3.780 KG.

AIR FLOWS:
EXHAUST GASES: 4765 (M³/H)/5.377 (M³/H)
COOLING AIR: 30000 (M³/H) / 41.400 (M³/H)
COMBUSTION: 2092(M³/H)/1.848(M³/H)

FUEL CONSUMPTION:
100% LOAD: 94.6 (L/H) / 108.9 (L/H)
75% LOAD: 70.9 (L/H) / 81.7 (L/H)
50% LOAD: NA/NA

NOTE: GENERATING SET MUST BE LOCATED WITH, AT LEAST, ONE METER FREE SPACE AROUND FOR MAINTENANCE WORK

SURFACE OF COOLING AIR INTAKE LOUVERS MUST BE, AT LEAST, TWICE SURFACE OF COOLING AIR EXHAUST LOUVERS

2004	DATE	NAME	RECOMMENDED INSTALLATION DIMENSIONS	
Drawn		J J G	STANDARD GENSET	
Examined				
Checked				
Scale				
WEIGHT	GSW530D-560D - 1500 RPM			Replacing:
	N° P[GSW530D-560D_ B00			

