

Saldatrici rotanti a corrente alternata a 2 poli senza spazzole.
 Protezione: IP 21, su richiesta IP23
 Tipo di elettrodi saldabili: rutile
 Fornita di protezione termica autoripristinabile contro i sovraccarichi
 Utilizzabile anche come alternatore monofase
 Forme costruttive: IM B34 - B3/B14, IM B35 B3/B9, IM B35 - J609a, IM B35 - J609b, SAE 5

2 poles brushless alternating-current rotating welders.
 Protection: IP 21, on request IP23
 Weldable electrodes: rutile
 Supplied with autoresettable thermal breaker against overload
 Can also be used as single phase alternator
 Shape: IM B34 - B3/B14, IM B35 B3/B9, IM B35 - J609a, IM B35 - J609b, SAE 5



Caratteristiche tecniche saldatrice / Technical characteristics welder

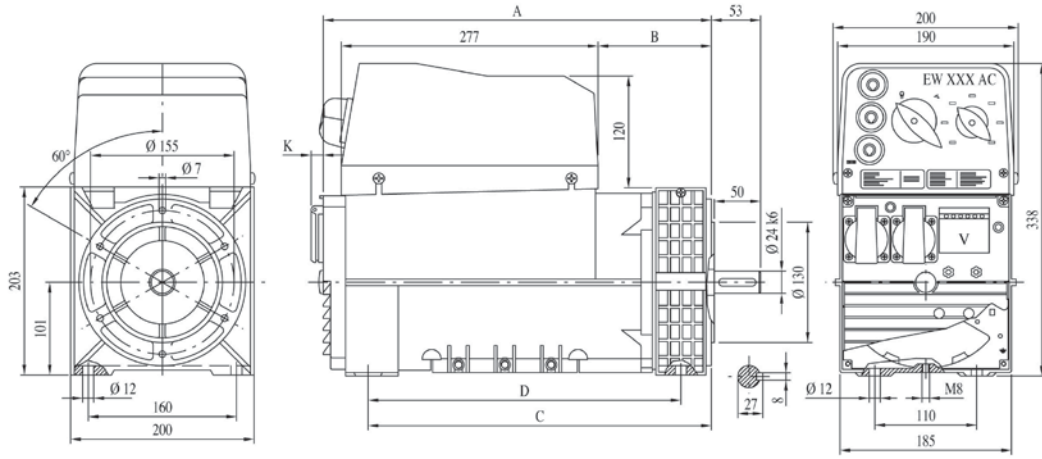
| Tipo Type | Codice Code | Velocità Speed rpm | Massa Mass IMB35 kg | Corrente di saldatura Welding current A | Tensione di innesco Strike voltage V | Tensione di saldatura Welding voltage V | Servizio Duty | Potenza assorbita Driving power |
|-----------|-------------|-----------------------|---------------------------|---|--|---|-------------------------|------------------------------------|
| EW 130 AC | 96101095.A1 | 3000 | 32 | 60÷130 | 50÷62.5 | 22.4÷25.2 | 130 A•35 % | 6.0 kW • 8.5 Hp |
| EW 180 AC | 96101125.A1 | 3000 | 37 | 60÷135 / 90÷180 | 50÷62.5 | 22.4÷25.4 / 23.6÷27.2 | 180 A•35 % / 125 A•60 % | 8.0 kW • 11.0 Hp |
| EW 200 AC | 96101180.A1 | 3000 | 42 | 60÷135 / 120÷200 | 45÷60 | 22.4÷25.4 / 24.8÷28 | 200 A•35 % / 180 A•60 % | 9.0 kW • 12.0 Hp |
| EW 140 AC | 96101095.E1 | 3600 | 32 | 60÷140 | 50÷62.5 | 22.4÷25.6 | 140 A•35 % | 6.5 kW • 9.0 Hp |
| EW 190 AC | 96101125.E1 | 3600 | 37 | 60÷135 / 100÷190 | 47.5÷60 | 22.4÷25.4 / 24÷27.6 | 190 A•35 % / 135 A•60 % | 9.0 kW • 12.0 Hp |
| EW 220 AC | 96101180.E1 | 3600 | 42 | 60÷135 / 120÷220 | 45÷60 | 22.4÷25.4 / 24.8÷28.8 | 220 A•35 % / 180 A•60 % | 9.5 kW • 13.0 Hp |

Caratteristiche tecniche alternatore monofase / Technical characteristics single phase alternator

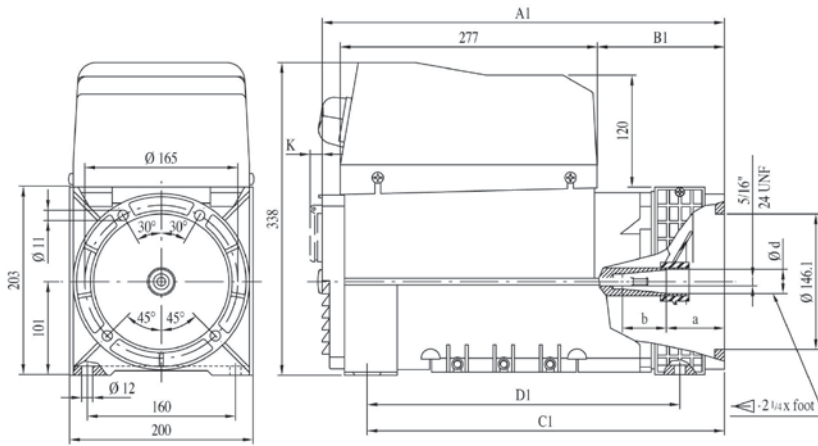
| Tipo Type | Codice Code | Velocità Speed rpm | Potenza Power (S1) kVA | Tensione regolabile Voltage adjustable V | Corrente (max S1) Current (max S1) A | Frequenza Frequency Hz |
|-----------|-------------|-----------------------|------------------------------|--|--|------------------------------|
| EW 130 AC | 96101095.A1 | 3000 | 4 | 115 / 230 | 17.4 | 50 |
| EW 180 AC | 96101125.A1 | 3000 | 5 | 115 / 230 | 21.7 | 50 |
| EW 200 AC | 96101180.A1 | 3000 | 7 | 115 / 230 | 30.4 | 50 |
| EW 140 AC | 96101095.E1 | 3600 | 5 | 110 / 220 | 21.7 | 60 |
| EW 190 AC | 96101125.E1 | 3600 | 6 | 110 / 220 | 26.1 | 60 |
| EW 220 AC | 96101180.E1 | 3600 | 8 | 110 / 220 | 34.7 | 60 |

Dimensioni / Dimensions

| Tipo Type | IMB34 • IMB35 - J609a IMB35 (C. 23 - C. 30) | | | | IMB35 - J609b | | | |
|-----------|--|-----|-----|-----|---------------|-----|-----|-----|
| | A | B | C | D | A1 | B1 | C1 | D1 |
| EW 130 AC | 365 | 69 | 315 | 283 | 381 | 85 | 331 | 283 |
| EW 180 AC | 365 | 69 | 315 | 283 | 381 | 85 | 331 | 283 |
| EW 200 AC | 420 | 124 | 370 | 338 | 436 | 140 | 386 | 338 |
| EW 140 AC | 365 | 69 | 315 | 283 | 381 | 85 | 331 | 283 |
| EW 190 AC | 365 | 69 | 315 | 283 | 381 | 85 | 331 | 283 |
| EW 220 AC | 420 | 124 | 370 | 338 | 436 | 140 | 386 | 338 |



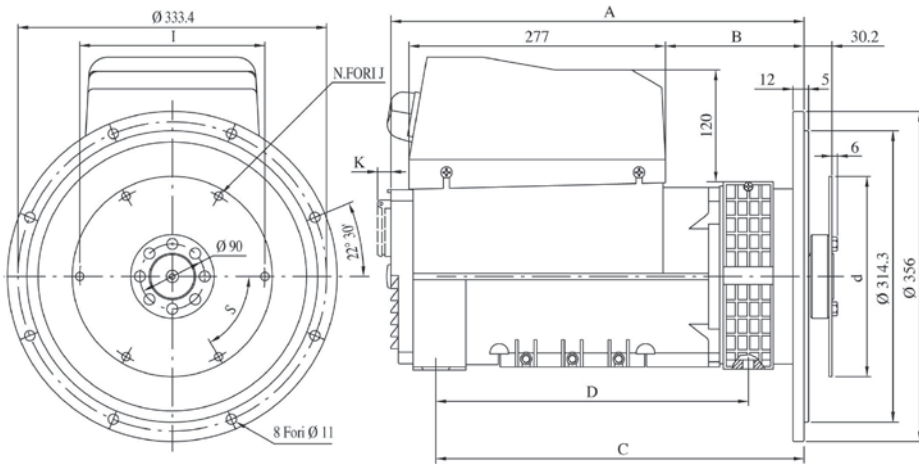
Forma costruttiva / Shape IM B34 - B3/B14 cod.E



| Cono/Cone | d | a | b | cod. |
|-----------|-------|------|------|------|
| 22.14 | 22.14 | 81 | 32 | D |
| 25.4 | 25.4 | 63.5 | 49.5 | D |
| 35 | 30 | 39 | 72 | F |

| | K |
|-------------------------------|----|
| Prese Schuko / Schuko sockets | 16 |
| Prese CEE / CEE sockets | 47 |

Forma costruttiva / Shape IM B35 - J609b cod.D/F

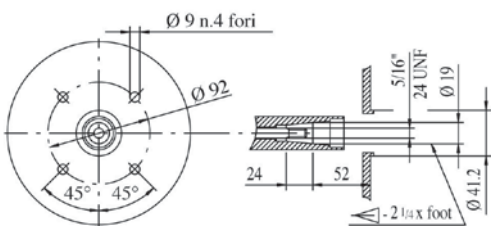


| SAE | Giunto a dischi Disk joint | | | | | |
|-----|-------------------------------|-------|-------|--------|---|-----|
| | L | d | I | N.FORI | J | S |
| 6.5 | 30.2 | 215.9 | 200 | 6 | 9 | 60° |
| 7.5 | 30.2 | 241.3 | 222.2 | 8 | 9 | 45° |

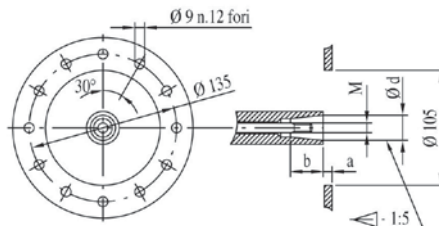
| Tipo Type | Da - From IMB35 C.30 | | | |
|--------------|-------------------------|-----|-----|-----|
| | A' | B | C | D |
| EW130-180AC | 377 | 81 | 327 | 283 |
| EW140-190AC | 377 | 81 | 327 | 283 |
| EW200AC | 432 | 136 | 382 | 338 |
| EW220AC | 432 | 136 | 382 | 338 |

| Tipo Type | Da - From IMB35 J609b C.35 | | | |
|--------------|-------------------------------|-----|-----|-----|
| | A' | B | C | D |
| EW130-180AC | 393 | 97 | 343 | 283 |
| EW140-190AC | 393 | 97 | 343 | 283 |
| EW200AC | 448 | 152 | 398 | 338 |
| EW220AC | 448 | 152 | 398 | 338 |

Forma costruttiva / Shape SAE 5 cod.5



Forma costruttiva / Shape IM B35 - J609a cod.C



| d | a | b | M | cod. |
|----|----|----|-----|------|
| 23 | 8 | 30 | M8 | A |
| 30 | 16 | 30 | M14 | B |

Forma costruttiva / Shape IM B35 - B3/B9 cod.A/B

